



LINTEC

DEWATERING SUBMERSIBLE PUMP CATALOGUE

Engineered for Durability, Designed for Performance.



ATLAS

EQUIPMENT SA (Pty) Ltd
Slurry Pumping Solutions

Table of Contents

PG
1

INDEX

KAZ
2-4

KAZ - Dewatering Submersible Pumps

- Appearance patent registration
- Technical specifications
- Performance curves
- Dimensional drawings
- Materials and components

KAS
5-7

KAS - Slurry Submersible Pumps

- Appearance patent registration
- Technical specifications
- Performance curves
- Dimensional drawings
- Materials and components

SH
8-11

SH - High-Head Dewatering Submersible Pumps

- Technical specifications
- Performance curves
- Dimensional drawings
- Materials and components



KAZ - DEWATERING SUBMERSIBLE PUMP

Product Overview – KAZ Series Dewatering Submersible Pump

- The motor and pump housing are constructed from rigid cast iron, ensuring long-lasting durability and resistance to wear in demanding environments.
- A high-pressure mechanical seal significantly increases the maximum submersion depth, offering reliable performance in deep applications.
- The impeller and inlet plate are made from high chrome alloy with a hardness rating of at least 58 HR, providing superior abrasion resistance and extended service life compared to conventional materials.
- A specially engineered water passage design allows cooling water to flow directly over the motor body, enhancing thermal regulation and operational safety.
- The vertical top outlet configuration enables installation in confined spaces, making it ideal for compact or restricted environments.
- Integrated thermal protection safeguards the motor from overheating, automatically activating thousands of times throughout the pump's lifespan.
- Advanced cable sealing technology prevents water ingress through the cable entry point, eliminating leakage concerns and improving reliability.
- Available in discharge sizes from 50mm (2") to 150mm (6"), with motor power options ranging from 1.5kW (2HP) to 15kW (20HP).

Specifications:

- Flow rate: up to 160 m³/h
- Head: up to 57 m
- Power range: 1.5 kW (2 HP) – 15 kW (20 HP)
- Voltage: 3-phase 380V ±10%, 50/60Hz
- Insulation class: F
- Protection rating: IP68
- Cable length: 8 m
- Water temperature: up to 40°C
- Maximum submersion depth: 25 m

Applications

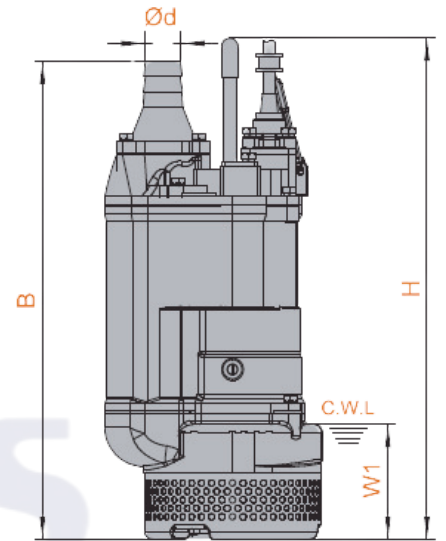
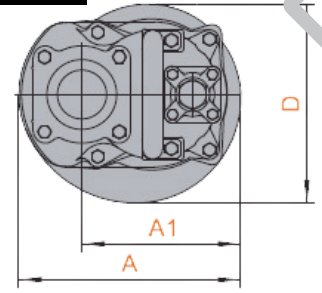
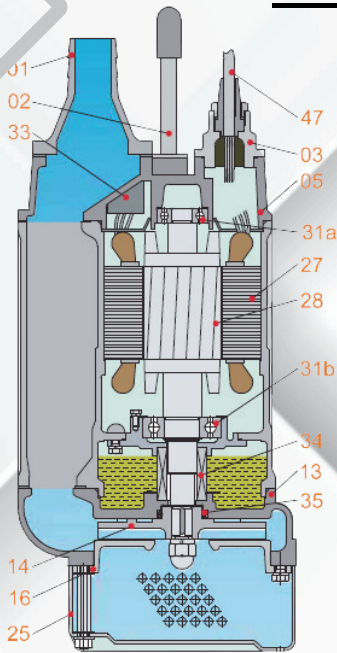
- Civil engineering and construction
- Mining, quarrying, and dirty water
- General-purpose dewatering

Optional Features

- Alternative voltage configurations



KAZ - DEWATERING SUBMERSIBLE PUMP

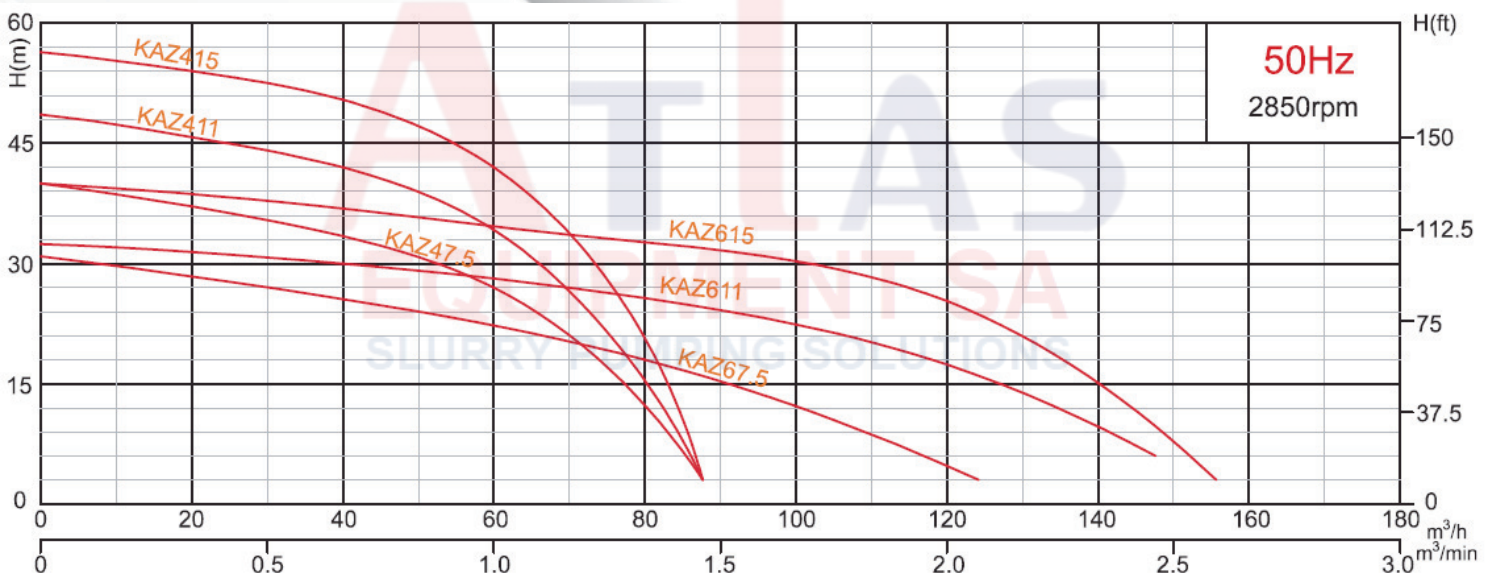
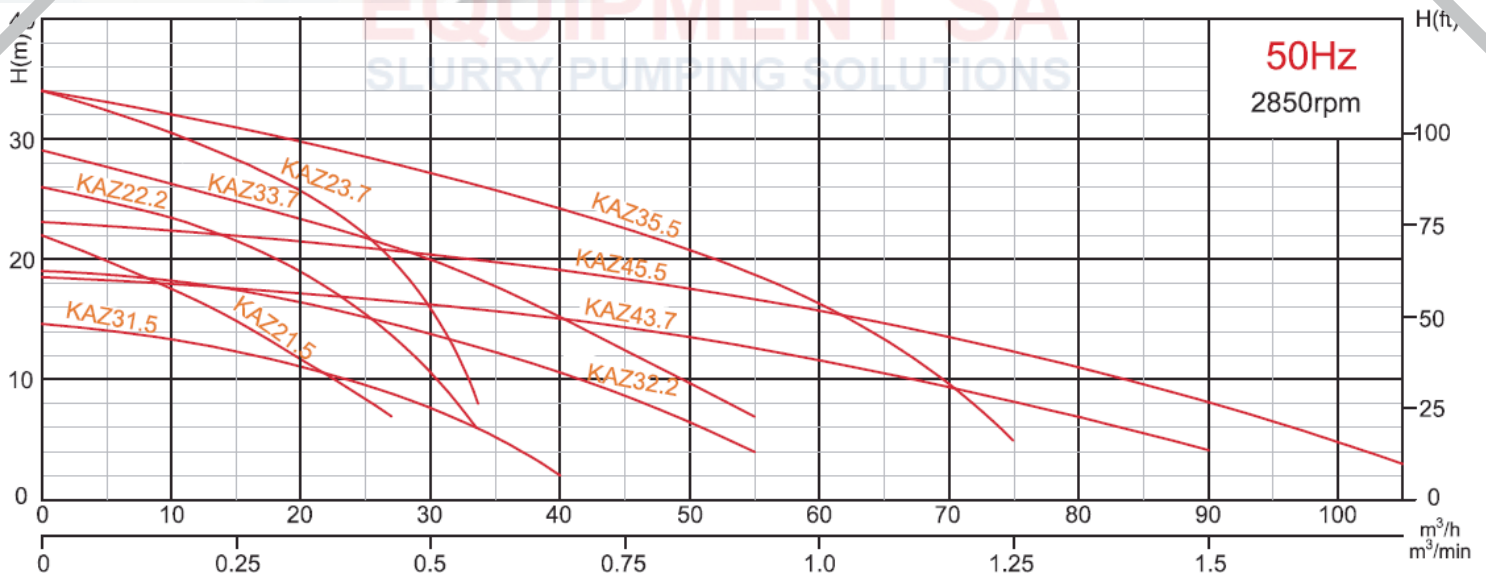


W1: Continuous running water level

Item No.	Part name	Material	Item No.	Part name	Material
01	Hose coupling	Cast iron	27	Stator	
02	Handle	Rubber&steel	28	Rotor	Shaft:AISI420SS
05	Upper cover	Cast iron	31a	bearing	Ball bearing
11	Motor body	Cast iron	31b	bearing	Ball bearing
13	Pump body	Cast iron	33	Motor protector	
14	Impeller	High chrome alloy	34	Mechanical seal	Sic-Sic/Carbon-Sic($\leq 2.2kW$) Sic-Sic/Sic-Sic($\leq 3.7kW$)
16	Inlet plate	High chrome alloy	35	Oil seal	
25	Strainer	Steel	47	Cable	

Model	d	A	A1	B	D	H	W1	N. W	G.W	Packing dimension
(50/60Hz)	mm	mm	mm	mm	mm	mm	mm	Kg	Kg	(mm)
KAZ21.5	50	235	173	535	216	505	120	36	40	590X290X260
KAZ31.5	80	235	173	535	216	505	120	36	40	590X290X260
KAZ22.2	50	235	173	535	216	505	120	39	43	590X290X260
KAZ32.2	80	235	173	535	216	505	120	39	43	590X290X260
KAZ23.7	50	283	208	628	252	629	150	63	68	690X340X330
KAZ33.7	80	283	208	628	252	629	150	63	68	690X340X330
KAZ43.7	100	283	208	642	252	629	150	63	68	690X340X330
KAZ35.5	80	283	208	671	252	590	150	77	84	740X370X380
KAZ45.5	100	283	208	686	252	590	150	77	84	740X370X380
KAZ47.5	100	330	240	764	314	676	190	106	116	810X370X410
KAZ67.5	150	330	240	790	314	676	190	108	119	860X430X450
KAZ411	100	373	255	807	350	695	190	136	148	840X370X410
KAZ611	150	373	255	807	350	695	190	139	150	860X430X450
KAZ415	100	373	255	842	350	755	190	144	158	890X430X450
KAZ615	150	373	255	842	350	755	190	146	160	890X430X450

KAZ - DEWATERING SUBMERSIBLE PUMP



Model 50HZ	Outlet mm	Motor power		Rated current (400V) A	Rated capacity		Rated head m	Max capacity		Max head m	impeller passage mm
		kW	HP		m³/h	m³/min		m³/h	m³/min		
KAZ21.5	50	1.5	2	3.5	15	0.25	15	27	0.45	22	8.5
KAZ31.5	80	1.5	2	3.5	30	0.50	8	40	0.67	14.5	8.5
KAZ22.2	50	2.2	3	5.0	18	0.30	20	33	0.55	26	8.5
KAZ32.2	80	2.2	3	5.0	36	0.60	11	55	0.92	19	8.5
KAZ23.7	50	3.7	5	7.7	12	0.20	30	33	0.55	34	8.5
KAZ33.7	80	3.7	5	7.7	30	0.50	20	55	0.92	29	8.5
KAZ43.7	100	3.7	5	7.7	60	1.0	11.5	90	1.50	18.5	8.5
KAZ35.5	80	5.5	7.5	11.4	36	0.60	25	75	1.25	34	8.5
KAZ45.5	100	5.5	7.5	11.4	60	1.0	16	105	1.75	23	8.5
KAZ47.5	100	7.5	10	15	48	0.8	30	84	1.40	40	11.5
KAZ67.5	150	7.5	10	15	90	1.60	15	124.8	2.08	31	19.5
KAZ411	100	11	15	22	60	1.0	35	84	1.40	48.5	11.5
KAZ611	150	11	15	22	102	1.70	22	147	2.45	32	19.5
KAZ415	100	15	20	29.5	60	1	42	84	1.40	56	11.5
KAZ615	150	15	20	29.5	102	1.7	30	156	2.6	40	19.5

KAS - SLURRY SUBMERSIBLE PUMP

Product Overview – KAS Series Slurry Submersible Pump

- The motor and pump housing are made of rigid cast iron, providing long-lasting durability and reliable performance in abrasive environments.
- A 4-pole motor design ensures extended operational life and smoother operation under heavy-duty conditions.
- The impeller and agitator are manufactured from high chrome alloy with a hardness rating of at least 58 HR, offering excellent resistance to erosion and impact from slurry.
- Slim body design with top discharge allows installation in narrow casings and confined spaces.
- The integrated agitator stirs settled solids, enabling efficient pumping of heavy slurry mixtures.
- Ideal for bentonite-mixed water in foundation works and muddy water in civil engineering applications.
- Built to handle sludge, mud, and other dense mixtures in mining, construction, and wastewater operations.
- Available in discharge sizes from 80mm (3") to 200mm (8"), with motor power options ranging from 4kW (5.5HP) to 22kW (30HP).
- IP68-rated protection and insulation class F ensure safe submersion and reliable operation up to 15 meters depth.
- Optional features include extended cable lengths and custom voltage configurations.

Specifications:

- Flow rate: up to 372 m³/h
- Head: up to 32 m
- Power range: 4 kW (5.5 HP) – 22 kW (30 HP)
- Voltage: 3-phase 380V ±10%, 50/60Hz
- Insulation class: F
- Protection rating: IP68
- Cable length: 8 m
- Water temperature: up to 40°C
- Maximum submersion depth: 15 m

Applications

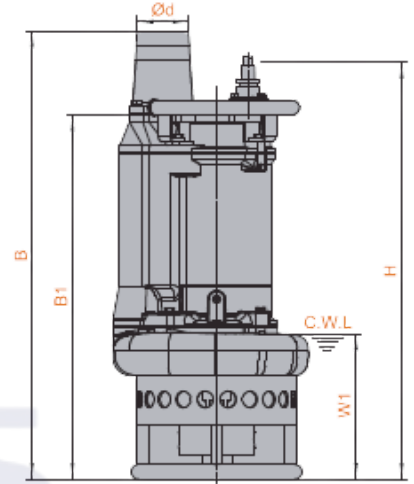
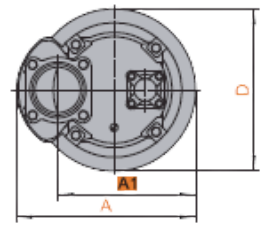
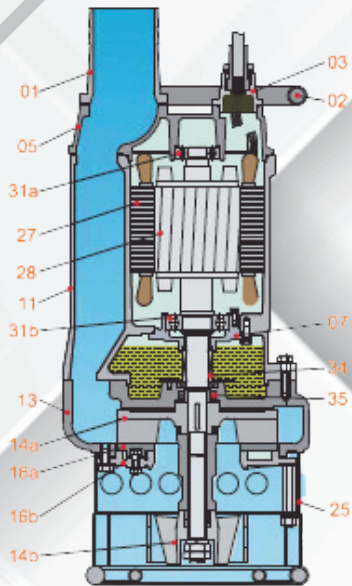
- Civil engineering and construction
- Mining, quarrying, and dirty water
- General-purpose pumping of sludge, mud, and bentonite mixtures

Optional Features

- Alternative voltage configurations



KAS - SLURRY SUBMERSIBLE PUMP



W1: Continuous running water level

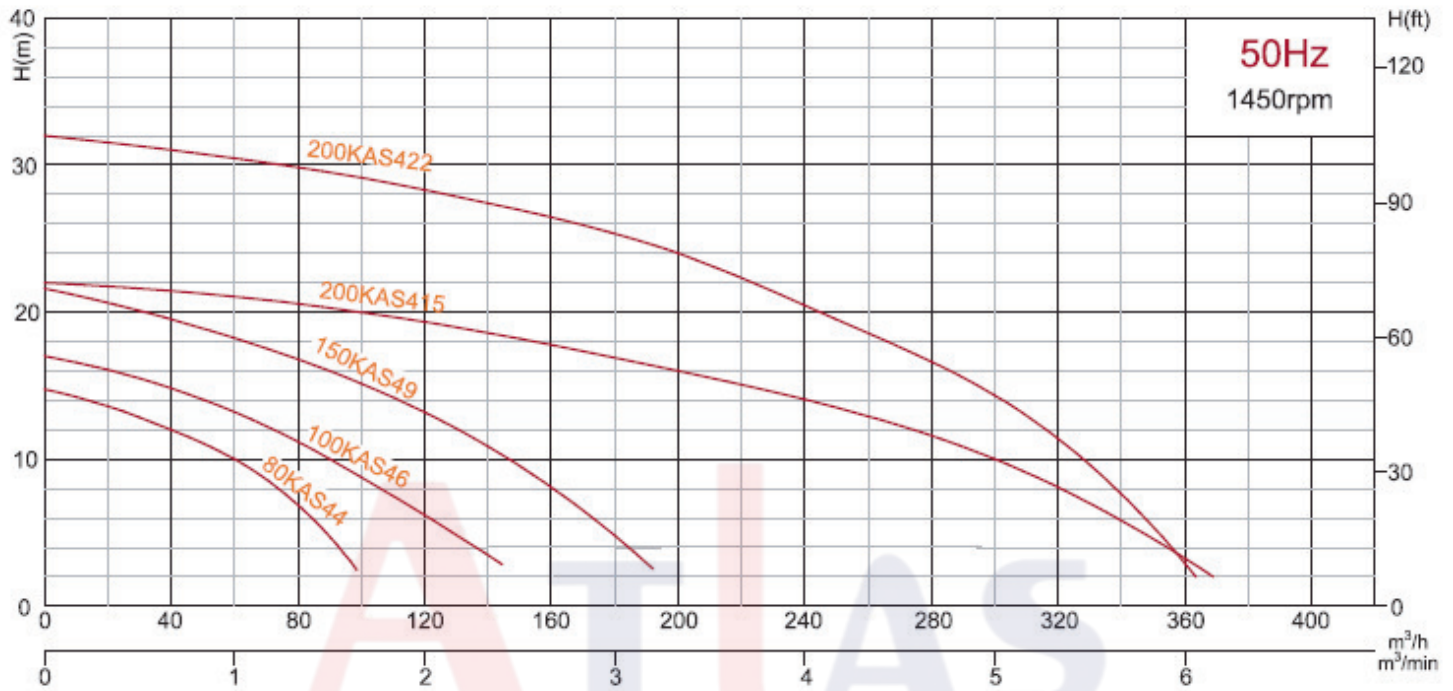
Item No.	Part name	Material
01	Hose coupling	Cast iron
02	Handle	Steel
05	Upper cover	Cast iron
07	Bearing house	Cast iron
11	Motor body	Cast iron
13	Pump body	Cast iron
14a	Impeller	High chrome alloy
14b	Agitator	High chrome alloy
16a	Inlet plate	High chrome alloy

Item No.	Part name	Material
16b	Inlet plate	Cast iron
25	Strainer	Steel
27	Stator	
28	Rotor	Shaft: AIS1420SS
31a	Bearing	Ball bearing
31b	Bearing	Ball bearing
34	Mechanical sea	Sic-Sic/Sic-Sic Tc-Sic/Sic-Sic(≥15kW)
35	Oil seal	
47	Cable	

Model	d	A	A1	B	B1	D	H	W1	N. w	G.W	Packing dimension
50/60Hz	mm	mm	mm	mm	mm	mm	mm	mm	Kg	Kg	mm
KAS44	80	350	260	816	678	326	730	250	108.5	119	885X385X395
KAS46	100	415	305	844	682	373	730	250	141	151	470X410X985
KAS49	150	434	324	889	727	407	776	250	171	183	470X470X1045
KAS415	200	484	352	1121	889	457	980	295	260	278	540X500X1220
KAS422	200	578	442	1245	1015	528	1200	330	408	434	740X570X1460

KAS - SLURRY SUBMERSIBLE PUMP

EQUIPMENT SA
SLURRY PUMPING SOLUTIONS



Model 50/60HZ	Outlet mm	Motor power		Starting Method	Rated current (380V) A	Rated capacity		Rated head m	Max capacity		Max head m	impeller passage mm
		kW	HP			m³/h	m³/min		m³/h	m³/min		
KAS44	80	4	5.5	D.O.L.	10.2	60	1.0	10	99	1.65	14.8	30
KAS46	100	6	8	D.O.L.	13.8	90	1.50	10	144	2.40	16.9	30
KAS49	150	9	12	D.O.L.	19.5	100	1.67	15	192	3.20	21.5	30
KAS415	200	15	20	D.O.L.	30.1	200	3.33	16	372	6.20	22	30
KAS422	200	22	30	Star-Delta	42	200	3.33	24	360	6	32	30

EQUIPMENT SA
SLURRY PUMPING SOLUTIONS

SH - HIGH HEAD DEWATERING SUBMERSIBLE PUMP

Product Overview – SH Series Dewatering Submersible Pump

- The motor and pump housing are made of rigid cast iron for long-lasting durability.
- Double mechanical seals allow for greatly increased submersion depth and high-pressure resistance.
- The hydraulic section is positioned below the motor, and the motor is cooled by the pumped water—even when the pump is only partially submerged.
- Top outlet design ensures space-saving installation in confined or vertical applications.
- Hermetically sealed motor enhances reliability and prevents internal contamination.
- Available in discharge sizes from 100mm (4") to 150mm (6"), with motor power options ranging from 22kW (30HP) to 30kW (40HP).
- Equipped with a dry-type submersible induction motor (2-pole) for high-head performance.

Specifications:

- Flow rate: up to 372 m³/h
- Head: up to 90 m
- Power range: 22 kW (30 HP) – 45 kW (60 HP)
- Voltage: 3-phase 400V ±10%, 50Hz / 380V ±10%, 60Hz
- Insulation class: F
- Protection rating: IP68
- Cable length: 20 m
- Water temperature: up to 40°C
- Maximum submersion depth: 30 m

Applications

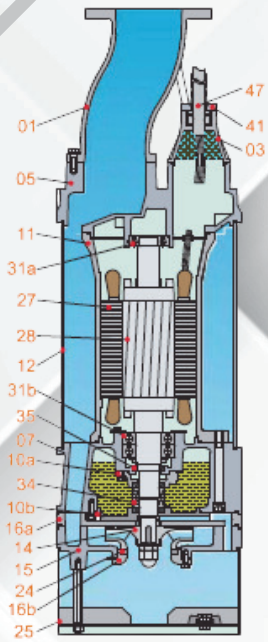
- Deep-well pre-dewatering or high-head dewatering
- Civil engineering and construction works
- Mines, quarries, coal ore & slurry handling
- General-purpose pumping

Optional Features

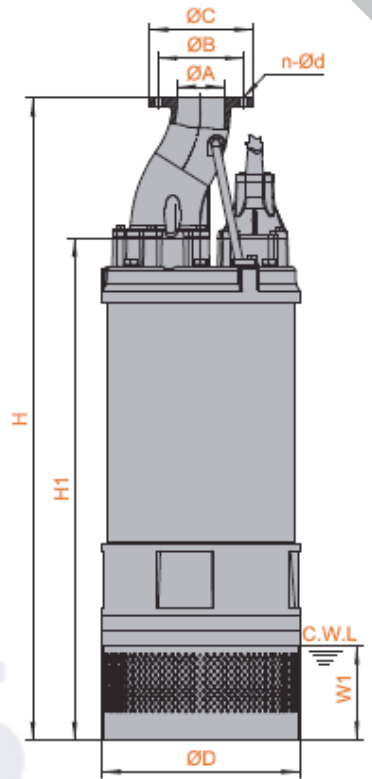
- Alternative voltage configurations



SH - HIGH HEAD DEWATERING SUBMERSIBLE PUMP



SH22-30kW

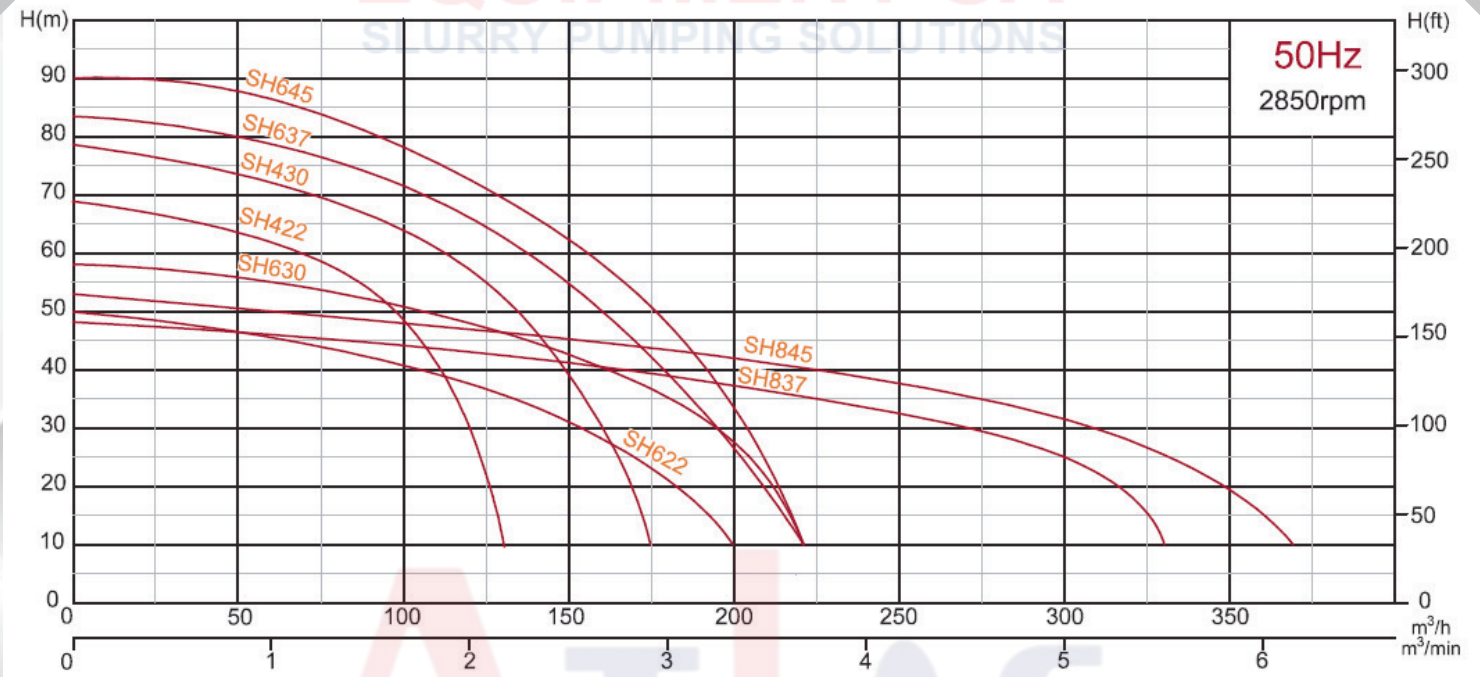


W1:Continuous running water level

Item No.	Part name	Material	Item No.	Part name	Material
01	Hose coupling	Ductile iron	16b	Inlet plate	Cast iron
02	Terminal box	Cast iron	24	Neck ring	High chrome alloy
05	Upper cover	Cast iron	25	Strainer	AISI304SS
07	Bearing house	Cast iron	27	Stator	
10a	Seal bracket	Cast iron	28	Rotor	Shaft:AIS1420SS
10b	Seal bracket	Cast iron	31a	Bearing	Ball bearing
11	Motor body	Cast iron	31b	Bearing	Ball bearing
12	Outer casing	High chrome alloy	34	Mechanical sea	Tc-Sic/Sic-Sic
14	Impeller	High chrome alloy	35	Oil seal	
15	Diffuser	Ductile iron	41	Shim	Cast iron
16a	Inlet plate	Ductile iron	47	Cable	

Model	A	B	C	n-φd	D	H	H1	W1	N. w	G. W	Packing dimension
(50/60Hz)	mm	mm	mm	mm	mm	mm	mm	mm	Kg	Kg	(mm)
SH422	100	180	220	8-φ17,5	420	1374	1072	240	370	410	620X740X1540
SH430	100	180	220	8-φ17,5	420	1374	1072	240	375	415	620X740X1540
SH622	150	240	285	8-φ22	420	1434	1082	250	385	425	620X740X1600
SH630	150	240	285	8-φ22	420	1434	1082	250	390	430	620X740X1600
SH637	150	240	285	8-φ22	530	1424	1072	180	570	615	680X740X1650
SH645	150	240	285	8-φ22	530	1424	1072	180	575	620	680X740X1650
SH837	200	295	340	12-φ22	530	1474	1072	180	575	625	680X740X1700
SH845	200	295	340	12-φ22	530	1474	1072	180	580	630	680X740X1700

SH - HIGH HEAD DEWATERING SUBMERSIBLE PUMP



Model 50/60HZ	Outlet mm	Motor power		Rated current A	Rated capacity		Rated head m	Max capacity		Max head m	impeller passage mm
		kW	HP		m ³ /h	m ³ /min		m ³ /h	m ³ /min		
SH422	100	22	30	41.5	66	1.1	60	130/138	2.17/2.3	68	6
SH430	100	30	40	54	72	1.2	70/75	170/144	2.83/2.4	78/82	6
SH622	150	22	30	41.5	120	2.0	37/40	200/210	3.33/3.5	50/52	15
SH630	150	30	40	54	140	2.33	45/48	220/216	3.67/3.6	58/64	15
SH637	150	37	50	66	60	1.0	80	220	3.67	83	6
SH645	150	45	60	80	84	1.4	80	220	3.67	90	6
SH837	200	37	50	66	216	3.6	35	330	5.5	48	20
SH845	200	45	60	80	270	4.5	35	372	6.2	53	20



LINTEC

HEAD OFFICE INFORMATION

SCAN ME



38 Jansen Str, Unit 14, Innes Park, Jetpark, Boksburg, 1459



+27 11 825-7777



sales1@atlas-pump.co.za / reception1@atlas-pump



www.tiiec.com

ATLAS

EQUIPMENT SA (Pty) Ltd
Slurry Pumping Solutions

★ Branch Company

📍 Distributor